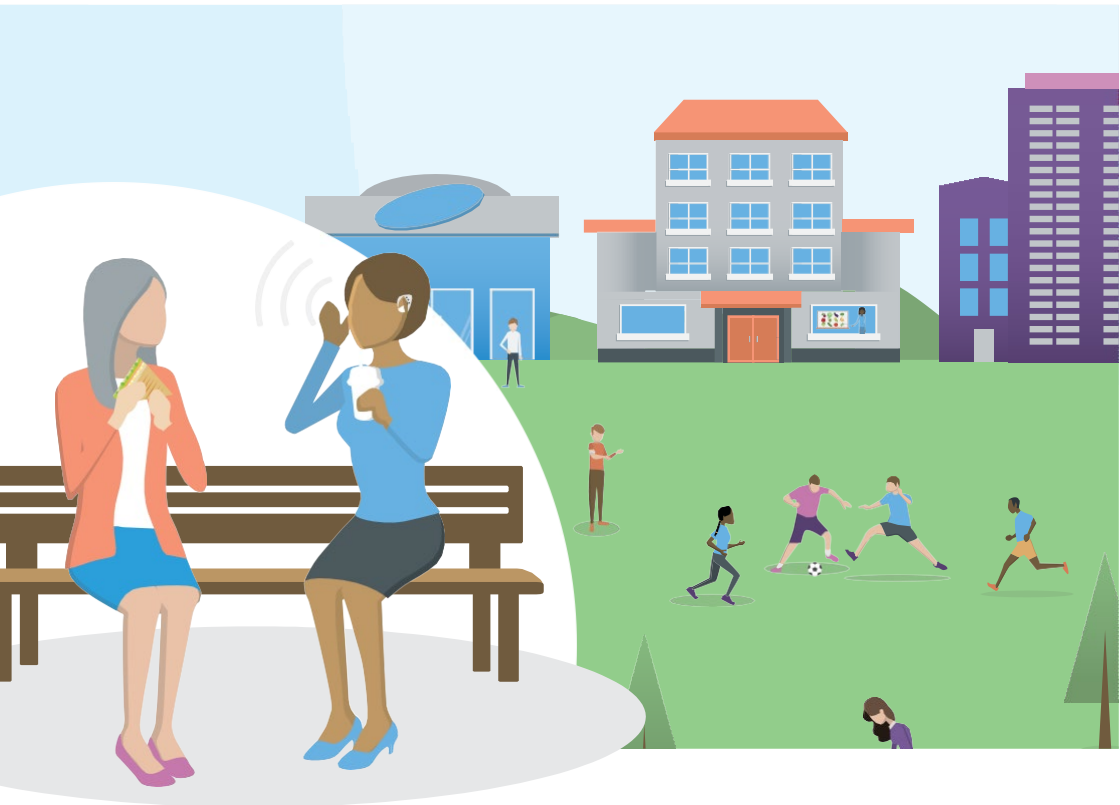


Long Term Conditions

# Speech and Language Therapy

For patients and families



# Speech and Language Therapy Service



**Supporting communication and swallowing difficulties.**

## **Our aim**

- To assess and treat communication and swallowing difficulties
- To provide information and education about communication and swallowing difficulties
- To support patients and carers adjust to life with communication and/or swallowing difficulties
- To work with other health and social care professionals, social support services and charities, in providing optimum care e.g. physiotherapy, Motor Neurone Disease Association
- To agree goals for therapy with the patient and family in order to maximise independence with swallowing and communication.





## Who can refer?

- GPs
- Other speech and language therapists
- Other health and social care professionals

## Areas of therapy

- Communication and/or swallowing difficulties related to neurological conditions e.g. Parkinson's disease, brain tumours, stroke
- Communication and/or swallowing difficulties related to other medical or surgical conditions.
- Stammering.

*NB Communication problems may include difficulties with any of the following: speech, language expression & comprehension, reading and/ or writing.*

## Appointments

- At East Surrey Hospital, Oxted Therapies Unit or in the home when the patient is unable to attend a clinic
- Appointments will last approximately 60 minutes
- An assessment may be followed by a period of therapy with goals agreed by both the patient and speech & language therapist
- Individual or group therapy may be available
- As part of an agreed therapy programme, regular home practice may be required



## Further information and feedback

If you would like to find out more about our services, please visit our website at:

[www.firstcommunityhealthcare.co.uk](http://www.firstcommunityhealthcare.co.uk)

If you would like this information in another format or language, or would like to provide feedback about this leaflet or any of our services, please contact:

Telephone: 01737 775450

Email: [enquiries@firstcommunitysurrey-cic.nhs.uk](mailto:enquiries@firstcommunitysurrey-cic.nhs.uk)

Twitter: @1stchatter

2nd floor, Forum House, 41-51 Brighton Road, Redhill, RH1 6YS

## Adult Speech & Language Therapy

For further information about the Speech and Language service please contact:

First Community Health & Care

Adult Speech and Language Therapy Team

East Surrey Hospital

Canada Avenue, Redhill, RH1 5RH

01737 768 511 extension 6085

[FCHCCIC.SLTFCHC@nhs.net](mailto:FCHCCIC.SLTFCHC@nhs.net)

If no-one is available, please leave a message and we will endeavour to respond as soon as possible.

Your Speech and Language Therapist is:

.....